



## Technical Bulletin n°1 12<sup>th</sup> March, 2009

**Reference:** FR20\_BT\_2009\_01\_UK  
**Date:** 12th March, 2009  
**Subject:** Throttle body regulation  
**Parts:** Throttle body

A default has been found on a batch of throttle bodies of the Renault Sport Spare Parts Department: the 2 holes of the under machined surface aren't filled. It is mandatory to fill them with a glue type **Loctite 3455 Hysol**® (Aluminium Epoxy). This fast-drying glue is available at the Renault Sport Technical Support, if needed.



Holes not clogged

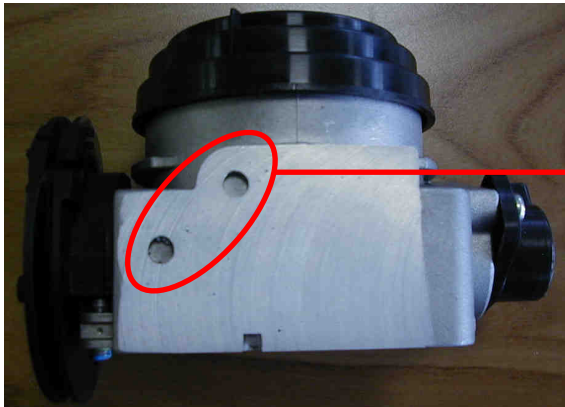


Holes clogged with glue

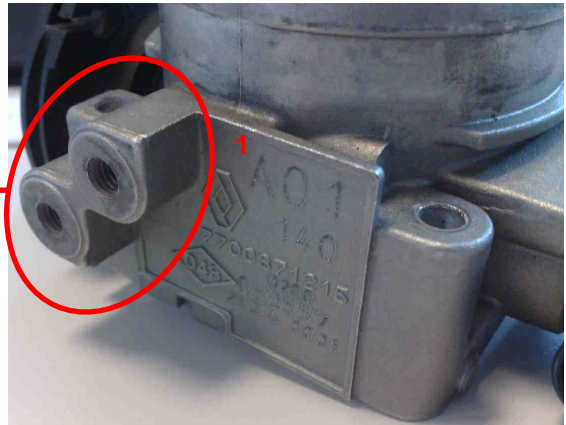
**NOTA:** Renault Sport advises you to fill the holes completely and to not forget to clog the holes (air intake pipe side) to prevent from any leakage.



Otherwise, the superior surface of a few genuine throttle bodies is machined. The 2 raw bosses (1) are so deleted. The 2 types of throttle bodies are allowed.



Genuine machined body



Genuine unmachined body

